



Fire Alarms • Intruder Alarms • Access Control • CCTV • EICRs & More!



Consultation • Design • Installation • Commissioning • Maintenance • Repairs

Supercharging Your
Safety & Compliance
Since 2003

Your business is a prize investment.

You deserve to have a trusted team behind you to keep your premises and your people safe and secure, whilst satisfying legal and insurance requirements.

I founded WFP back in 2003, following a career in the Royal Navy and then as a fire alarm engineer. My ambition was to start a business built on offering *sound* advice, *outstanding* customer service and *reliable* engineering.

We aren't just any old fire, security and electrical team. We'll solve your problems, but we'll also train you to confidently operate your systems, as well as understand your requirements as your premises' 'Responsible Person'.

Plus, we'll look for ways to *save you money*, be it through free technical phone support to help avoid call-out fees, or by actually *finding your fault and fixing it* - not just opting to for a throw away and replace job.

Our engineers are trained practically in-house and offered theory training by the Fire Industry Association (FIA), whilst our third-party auditors and accreditors, BAFE and SSAIB, mean you'll have ultimate peace of mind that you're in safe hands.

I look forward to showing you all that we can do for you!

Sincerely yours,



Paul Field
Founding Director
WFP Fire, Security & Electrical

You're in **certified**,
capable hands...



We're rated **5 stars**
consistently on
Trustpilot & Google



Running a business is stressful...

Why make it harder for yourself by working with multiple contractors when you can have just *one trusted team*? Here's a snapshot below of the services we can offer you...

From consultation through to installation and ongoing servicing, WFP's got your back:



Fire

- Sprinklers
- Fire Doors
- Fire Alarms
- Fire Hydrants
- Dry/Wet Risers
- Gas Suppression
- Emergency Lights
- AOV/Smoke Vents
- VESDA/Air Sampling
- Disabled Refuge Alarms
- Emergency Voice Comms
- Fire Alarm Monitoring/Alert the Fire Brigade!



Security

- Door Entry
- Panic Alarms
- Analytic CCTV
- CCTV Systems
- Access Control
- Intruder Alarms
- Automatic Gates
- Disabled Toilet Alarms
- Intruder Alarm Monitoring/Alert the Police!



Electrical

- Portable Appliance Testing (PAT)
- Fixed Wire Testing (EICRs)
- Electrical Remedials Following Unsatisfactory Testing
- EV Charging Point Installation and Maintenance



APP's

- Paxton Access Control
- Control Your Intruder Alarm & CCTV Remotely
- Control you Fire System remotely

We can also help you with...



Fire Safety Training



Fire Drills & Evacuations



Fire Risk Assessments

Whatever your business, whatever your sector, we'll offer you the tailored service you deserve that ticks all of your boxes and allows you to focus on what's most important.

We're not just about safety and compliance; making your life easier is our mission, too!

Here are a few of the names that trust us:



...The types of businesses we safeguard:

- Offices
- Charities
- Hospitals
- Churches
- Care Homes
- Crematoriums
- Apartment Buildings
- Bars and Restaurants
- Golf and Country Clubs
- Dentists, Vets & Doctors
- Factories & Warehouses
- Hotels and Guesthouses
- Health and Leisure Centres
- Listed Buildings & Museums
- Nurseries, Schools & Colleges
- Retail Stores & Shopping Centres



*I needed **one certified company** to look after all our fire and security systems rather than have different contractors. WFP has given us the **best value, in both cost and service**. The **24/7 support line is great** and the Service Desk staff are really helpful.*

David Murdoch, Facilities Manager
Essex Wildlife Trust



...And the people we build relationships with:

Facilities Managers

Health & Safety Personnel

Compliance Officers

Headteachers

The 'Responsible Person'

Site Managers

Caretakers

Property Owners

“ **By failing to prepare, you are preparing to fail.** ”

- Benjamin Franklin

Planned Preventative Maintenance (PPM) is the *secret* to time and money saving...not to mention maintaining optimum safety and compliance.

Every commercial building will have one of two safety management approaches:

- 1) The **Reactive** Approach *OR*
- 2) The **Proactive** Approach

If you're someone who plans, budgets and keeps on top of your inspections/services then you are a *proactive* Responsible Person*. When it comes to your fire safety, security and electrics, PPM is critical and relies on a proactive management approach.

Businesses who implement a tight Planned Preventative Maintenance (PPM) strategy:

- ✓ **Can budget better** with no impromptu costs
- ✓ **Benefit from a longer lifespan** of their systems/investments
- ✓ **Feel confident during audits,** risk assessments & insurance applications
- ✓ **Pay less for call-outs** and servicing as reactive repairs will be few & far between
- ✓ **Feel less pressured** & stressed with full control
- ✓ **Promote diligent health & safety** for happy staff & customers
- ✓ **Don't suffer unplanned downtime,** which can impact productivity & earnings
- ✓ **Can be pickier with their choice of provider,** not settling for just anyone because they have to act fast in an emergency

***The 'Responsible Person':** A term you may have seen dotted around this brochure a few times! This relates to the person in control of the day-to-day operations of the building, and is who the buck stops with when it comes to fire safety and risk. *Are you your building's Responsible Person?*

As the 'Responsible Person' for your premises, you should know there are a few laws which apply to you...so by taking on this responsibility, you are accepting liability for your building's compliance with health and safety legislation.

Here are the notable laws and regulations to be mindful of:



Regulatory Reform
(Fire Safety) Order
2005



Health & Safety at
Work Act 1974



Workplace (Health,
Safety & Welfare)
Regulations 1992



Management of
Health & Safety at
Work Regulations
1999

Making sure your fire safety systems and products are regularly maintained and serviced is **fundamental to your duties** and compliance with the above laws.

Here are a few examples of what systems or products need periodical testing by a competent specialist (refer to your Fire Risk Assessment for all the servicing you need for your premises, and if you've not got one, just ask!):



Fire Alarm Maintenance:

Every six months (unless stipulated otherwise in your Fire Risk Assessment) as stipulated in BS 5839-1

Fire Extinguisher Maintenance:

Every year as stipulated in BS 5306-3



Electrical Installation Condition Report (EICR):

Typically every 5 years (depending on your building type and Fire Risk Assessment) as stipulated in BS 7671

Contact us to help you put together
your bespoke PPM Package!

So, *how* do you exercise savvy safety and business management?

If you're the Responsible Person, there's a few key actions you ought to be ticking off on an ongoing basis...in addition to the periodical maintenance servicing of your systems/equipment:

Have a Fire Risk Assessment carried out on an annual basis

Arrange for a competent risk assessor to evaluate your premises' fire safety, and act on any recommendations made.

This is your legal document which demonstrates your due diligence, and should reflect your premises in its current state - always.

Carry out your weekly/monthly testing

Your fire alarm should be tested on the same day at the same time each week, and should be done during normal working hours, to ensure everyone can hear the alarm, knows what it sounds like and understands that a sounding of the alarm outside of that remit means it's time to evacuate.

You will likely have other periodical checks, including monthly emergency light flick testing, as well as visual inspections on health & safety equipment, such as fire doors and fire extinguishers; taking notice of any damage, obstructions or misuse between maintenance services.

TOP TIP 1: Make sure to record tests in your log book

We provide one when you sign on to a maintenance subscription with us, as this is your evidence that you've carried it out.

TOP TIP 2: Is your alarm monitored? Keep your Alarm Receiving Centre (ARC) in the loop...

If your fire alarm is set up with a key holder and/or emergency Fire Brigade response, you'll need to alert the ARC when you do your weekly test, so they don't think it's a genuine activation.

They should also receive the signal to say the alarm was triggered, so if this wasn't the case, this will need investigating by your alarm company.

Ensure staff are trained, everyone knows evacuation procedures & regular drills are conducted

If there are vulnerable people within your building, you will also need to ensure they have a Personal Emergency Evacuation Plan (PEEPs) tailored to them.

Want to learn more?
Head to w-fp.co.uk/blog/

We don't just see ourselves as implementors of fire safety and security systems, but innovators, too!

We look for ways to help make commercial property management as seamless as possible, whilst educating along the way to equip you with the knowledge to confidently manage your building's health and safety.

So, whether you're an experienced site manager with an abundance of health and safety knowledge, or a new building owner looking for help getting to grips with your building management, we're sure we'll get on like a house on fire (*not literally, hopefully!*).

...And remember, just because you've got to fulfil certain responsibilities (*like your six-monthly fire alarm maintenance, for instance*), doesn't mean you have to settle for just anyone looking after you - you do have a choice in the matter!

Here's why our customers love working with us:



Free telephone assistance

Handy if you need technical help and sharpish, plus it saves on the cost of a call-out!



Pay-monthly options

Take charge of your budget by breaking down your maintenance cost over monthly direct debits.



Fixed Price 3 or 5 year contracts

Beat inflation and know what you're paying in advance by freezing your maintenance service price for 3 or 5 years!



Choice of maintenance packages

From our Basic Compliance package through to Flagship Protection, you can guarantee we'll cater to your bespoke requirements.



Open protocol freedom

Some alarm installers fit equipment so only *they* can touch or program it, locking you into a service subscription with them. We would never do such a thing!



Portable contracts if you move

If you lease your premises, or if you just decide it's time to move, you can shift your contract across to the new site with ease.



Free surveys & designs

Need a system upgrade or a brand new installation for another site, we'll offer a survey & design (worth £2,500+VAT) and/or deduct it from your install cost!



Lease your installation

Installations can swallow up large chunks of your budget. With leasing, you can break down payments over 2-5 years!



Inherited warranties

Just had a new system installed by another provider, but want to move away from them for the ongoing servicing without impacting your product warranty? We'll honour and inherit it!



Extended warranties

If we maintain something we've just installed for you, we'll upgrade your standard 1-year manufacturer's warranty to 3 or 5 years for security and fire alarms respectively.



Save money with a spares pack

Ever had a visit where the engineer needed to replace a part but didn't have it to hand?

A spares pack will contain a pack of devices tailored to your system so it can be easily switched out when the engineer discovers it needs changing when on site - no waiting, no system down-time and no extra costs for parts/an additional visit!



£50 worth of gifts for you & a friend when you recommend!

If you refer a friend you'll each receive a gift worth £25!

Choose from an Amazon gift card, a donation to charity or a credit to your account with us.

...Plus you'll enjoy
EPIC customer care!

Consolidate your services with us to:



Save on Paperwork

Forget Multiple Contracts...



Be Kinder to the Planet

Less Energy Used with Fewer Visits



Have One Team to Call

Panic Less & Save Just One Number

You're reading this brochure for one of three potential reasons:

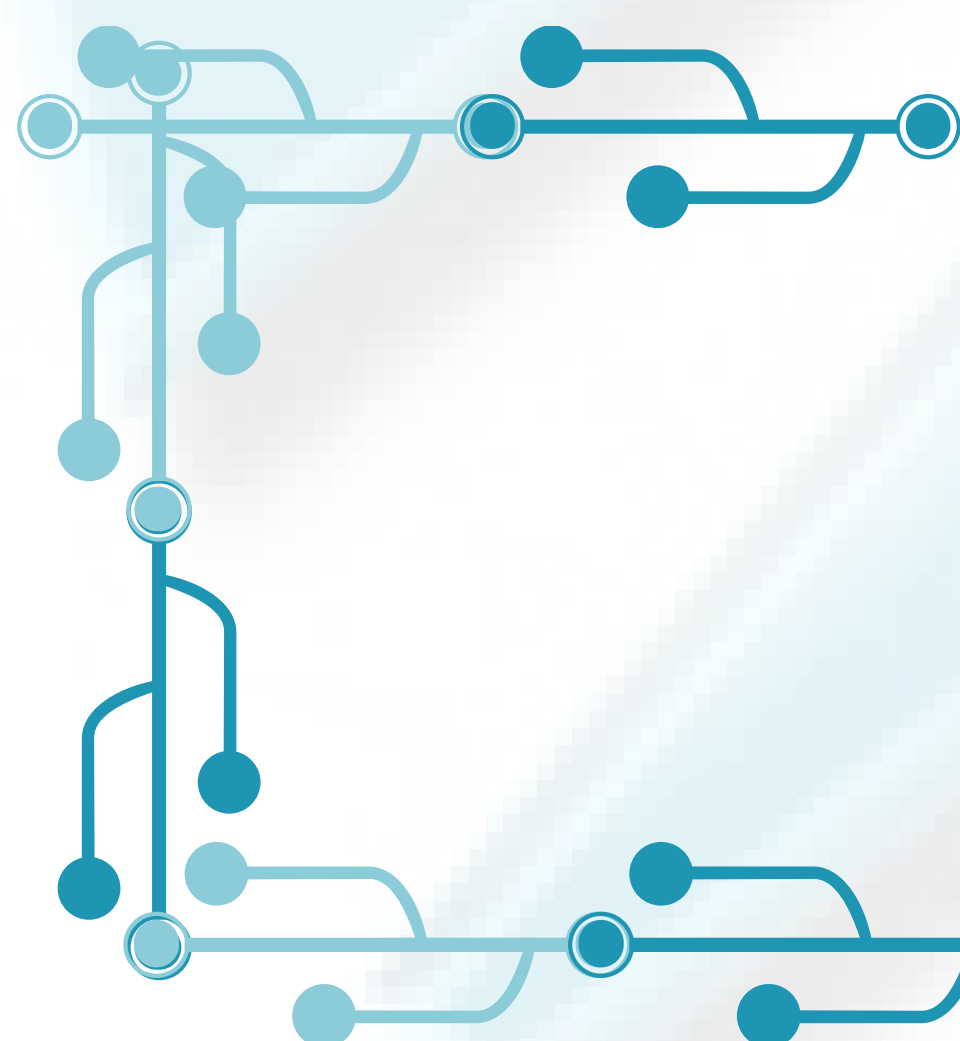
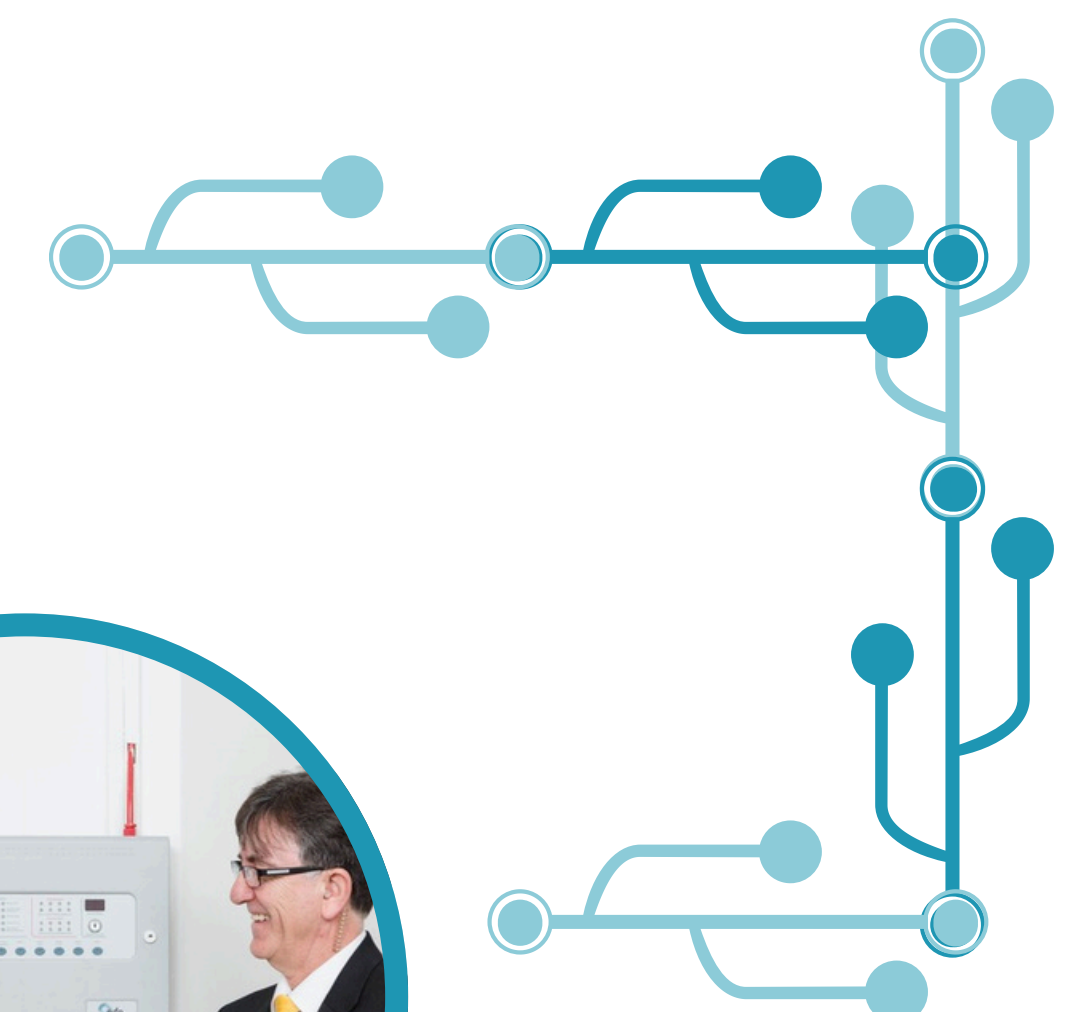
- 1) **You're fed up** with your current fire, security and compliance provider's service...
- 2) **You're approaching your maintenance renewal** and fancy seeing if the grass might be greener with another provider...
- 3) **You've been told you need to have your essential maintenance** for your building's fire/security/electrical installations, and want to bag yourself a top-tier team for the job.

Perhaps your maintenance is overdue and this has been flagged by your risk assessor or insurer, or maybe you've moved premises and need to get new servicing contracts in place. However you've come to find us, we're here to help!

Take a look at the simple steps below to find out how to get started on the journey to optimum safety, legal compliance and savvy business management with WFP!



Step 1: We'll listen to your needs



Step 2: Your site survey



Step 3: Your service



Step 4: 24/7 support and future-proofing your safety & security!

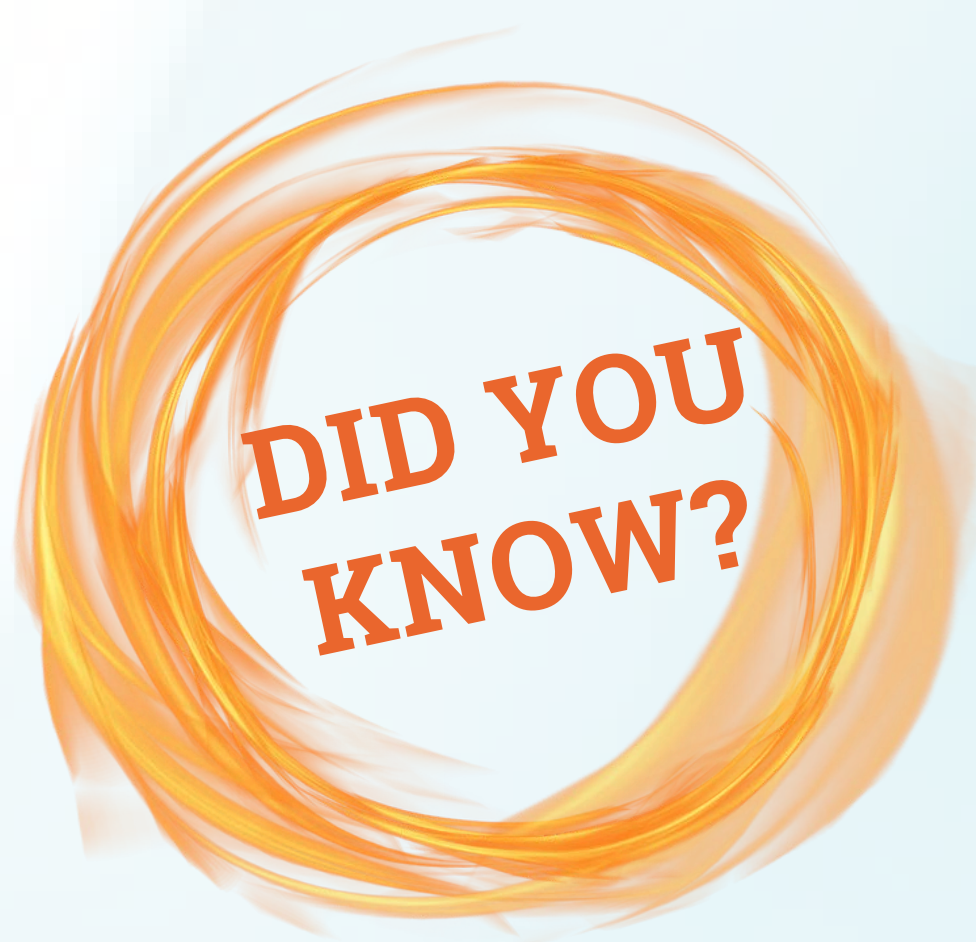


It's super simple! Get started by calling 01277 724 653 or emailing Help@w-fp.co.uk

The fire industry is largely unregulated. Yes, we said it.

Things are changing and moving in the right direction (*unfortunately, often due to predictable but avoidable events*), but it does mean that choosing a reliable provider can be a bit of a minefield.

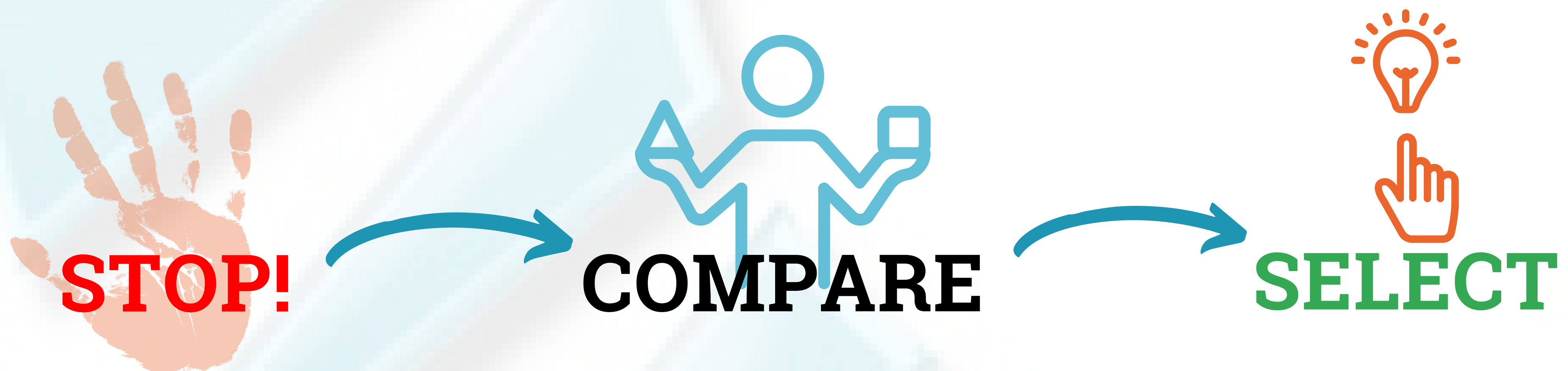
If you're comparing providers for essential repairs, maintenance or installations of your life safety and security systems, make sure you're comparing apples for apples, i.e. like for like.



Deficiencies in engineering or service resulting in a health and safety breach (e.g. a fault left unresolved for a significant period of time) comes back to **you as the Responsible Person**.

By hiring a company to look after you doesn't mean you pass the buck of responsibility onto them. So, you can be held accountable for the efficacy (or lack of) in the company you choose, should something go wrong.

To avoid this, it's a good idea to do a cross comparison to make sure you're thoroughly vetting the quality of providers, and *not* just the price:



On the next page, we've given you the full low-down of due diligence items to help you consider whether we're the right company to be trusting to keep your building(s) safe and compliant.

This is an incredibly useful tool to be using as a checklist for any provider you're using concerning the health and safety of your building.

**Already convinced we're the team for you?
Call 01277 724 653!**

Criteria	Description	WFP
Accreditation	BAFE SP203-1	Certified in Fire Alarm Design, Installation, Commissioning & Maintenance
Accreditation	BSI Kitemark	Approved for Fire Alarm Installations
Accreditation	SafeContractor	Approved in Health & Safety
Accreditation	SSAIB	Accredited for Intruder Alarms and CCTV systems
Insurance	Commercial Liability (Public & Products Liability & Professional Indemnity)	Verified and covered for up to £5M PI by Insurance Experts
DBS Checks	Disclosure & Barring Service for criminal checks on staff	Standard protocol for all of our team members
Membership & Training	Fire Industry Association (FIA) Plus Engineers Trained with PASMA & IPAF	We use this to train our team members on British Standards, industry innovations and regulatory changes
In-House Training	Conducted individually and as a team for theoretical and practical training in our purpose-built training room	Our Technical Director conducts audits for quality control, as well as our annual third-party accreditation visits

Plus, a HUGE consideration needs to be...



"What's their reputation like?"

You've worked hard to build your business and protect your people, which means you need to find the delicate balance of finding value for money with reliable service providers. A wrong or misinformed choice could end up really costing you.

What's the best way to find out if a company is reputable? Look at their reviews, of course! Head to w-fp.co.uk/customer-reviews/ to read our full catalogue of customer reviews from Trustpilot and Google, or check out a few on this page...



*The Team at WFP are amazing, **super friendly, always willing to help and on the ball** when it comes to diary management.*

As a property manager who manages a huge portfolio that is definitely super helpful to know the team will always remind me when service appointment are due.

*I can most definitely say WFP have **exceeded all my expectations in terms of service and pricing.***

Janine Ford, Property Manager
Haus Block Management



*Amazing company, **always go that extra mile** to help.*

They look after our fire alarm panel, emergency lighting, fire extinguishers and intruder alarm. Thank you so much.

Damian Spencer, Site Manager
Baddow Hall Infant & Junior School



*I have always received a **prompt, professional and proactive service.***

*It is great to be able to work with a company with the **technical knowledge and can-do attitude** like WFP to enable us to focus on our core business.*

Paul Bleck, Managing Director
Bartech Marine Engineering



Would you pass a spot check from your local Fire & Rescue Service?

Find out if your premises is safe and legally compliant with a **Fire Risk Assessment**.

Fulfil your due diligence

Instil hazard awareness

Rely on safety experts

Eliminate fines and prosecution

Get your no-obligation quotation!



01277 724 653



Contact Your Team Today for a **FREE** Consultation!



01277 724 653



www.w-fp.co.uk



help@w-fp.co.uk



@wirefreeprotection



@wirefreeprotection



@WFP Fire and Security



Serving Essex, London, Herts, Kent, Norfolk, Suffolk...& Beyond!